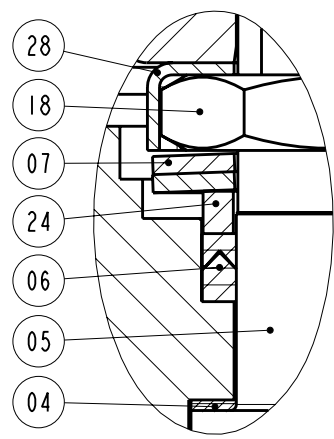
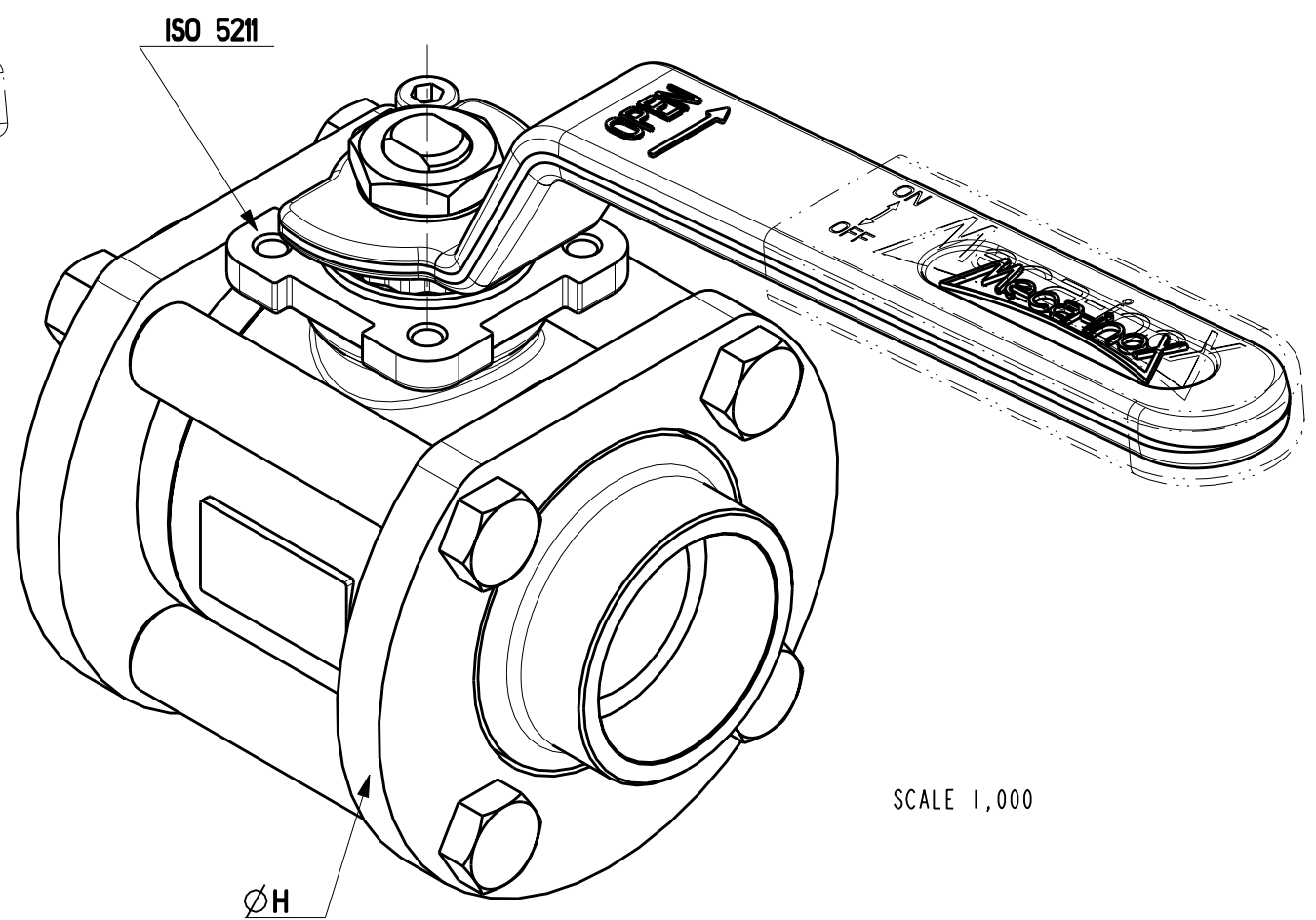


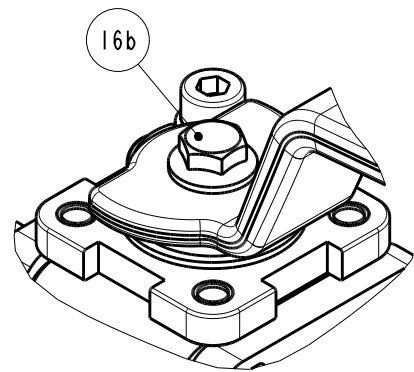
27 OPTION
Color Plastic Cover
With or Without Stamp



DETAIL A
SCALE 2,000



SCALE 1,000



Detail Lever DN 10 (008-012)

DN	ØA	ØB	ØCI	D	E	F	G	ØH	ØII	J1	K	L	N	ISO	PN
008	11.1	19.6	11.1	65	70	120	20.4	56	14.3	10.5	27.5	7.2	3.6	F03	100
012	11.1	24.0	12.6	65	70	120	20.4	56	17.8	10.5	27.5	7.2	3.6	F03	100
015	14.0	29.0	16.1	70	73	120	24.4	63	21.9	10.5	31.0	13.3	8.7	F03	100
020	19.0	34.3	21.7	85	91	160	31.6	80	27.3	13.5	37.9	18.3	12.6	F04	100
025	25.0	41.0	27.3	100	95	160	41.4	88	34.0	13.5	42.0	18.3	12.6	F04	70
032	32.0	49.8	36.0	110	111	190	48.2	104	42.8	14.5	54.0	24.1	16.2	F05	70
040	38.0	55.9	41.9	125	116	190	56.2	117	48.9	16.0	59.0	24.1	16.2	F05	50
050	50.0	69.2	53.1	150	137	230	71.0	148	61.3	17.5	73.0	29.5	19.0	F07	50

**** Item17-> DN08 a DN40 : 4 / DN50 : 8**

Item	Qty	Description	Material EN	Material AISI	Material NF
28	1	Stop nut gland	S. steel 1.4307	S. steel 304L	Z3CN19-09
27	1	Plastic cover Option	PVC 78 Sh	PVC 78 Sh	PVC 78 Sh
24	1	Gland	S. steel 1.4404	S. steel 316L	Z2CND17-11-02
23	1	Screw stop	S. steel 1.4301	S. steel 304	Z7CN18-09
22	1	Nut stop	S. steel 1.4307	S. steel 304L	Z3CN19-09
19	1	Stop ring	S. steel 1.4307	S. steel 304L	Z3CN19-09
18	1	Nut gland	S. steel 1.4404	S. steel 316L	Z2CND17-11-02
17	**	Nut	S. steel 1.4307	S. steel 304L	Z3CN19-09
16b	1	Lever screw DN 10	S. steel 1.4301	S. steel 304	Z7CN18-09
16	1	Lever nut	S. steel 1.4404	S. steel 316L	Z2CND17-11-02
15	1	Lever	C. steel 1.1181	ASTM 1035	XC38
14	2	Body seat	PTFE	PTFE	PTFE
13	4	Screw DN08 at 40	S. steel 1.4301	S. steel 304	Z7CN18-09
		Stud DN50	S. steel 1.4301	S. steel 304	Z7CN18-09
12	4	Distance piece	PTFE red	PTFE red	PTFE rouge
11	2	Body flange	S. steel 1.4306	S. steel 304L	Z3CN18-10
10	2	Loose end	S. steel 1.4404	S. steel 316L	Z2CND17-11-02
09	1	Ball	S. steel 1.4409	S. steel CF-3M	GX2CrNiMo 19-11-02
08	2	Ball seat	PTFE	PTFE	PTFE
07	2	Spring washers	Inox 1.4310	S. steel 301	Z12CN17-07
06	1	Gland-packing	33%C+2%Gr PTFE	33%C+2%Gr PTFE	33%C+2%Gr PTFE
05	1	Stem	S. steel 1.4404	S. steel 316L	Z2CND17-11-02
04	1	Steam thrust seal	20%PEEK PTFE	20%PEEK PTFE	20%PEEK PTFE
03	1	Wafer body type	S. steel 1.4409	S. steel CF-3M	GX2CrNiMo 19-11-02

Description	Type Ends	Connection	Bore	Material	Ø
Ball valve 1/4 Turn. Seat Standard Release 4	Loose ends	Socket Welding	Full	St. Steel	Nominal Diameter
PS4	L	SW	N	I	xxx

DESIGNATION PS4 Ball Valve, Stainless Steel, SW, Full Bore						Projet	Folio
TITLE Standard Seat & Seal, Standard Lever						16	1/1
c	Mise à jour matière	09/10/09	<p>Expert in Ball Valve</p> <p>Tél. 03.44.06.44.00 Fax. 03.44.81.57.05</p> <p>32 Rue des Routis 60850 Le Coudray St Germer</p>				
b	Mise à jour matière	28/11/02					
a	Modif. Rep 16b						
	Supp. Rep 22b (rondelle)	22/11/01					
Indice	Observations	Date	Ce document est la propriété de la société MECA-INOX Il ne pourra être communiqué à un tiers sous peine de poursuites. This document is the property of MECA-INOX Legal action will be taken if it is given to a third party for fabrication.				
Diffusion des Plans	Infor	Achal	Fabri	Recep	CTL	Format	
	✓		✓		✓	A3	
Observations			Standard PS4		Echelle	Scale	Tol Génér
					0,900		± 0,1
					Dessiné par - Drawn by		Vérifié par - Checked by
					L.Durand		L.Logghe
					Date Création		Date Modif
					04/06/98		09/10/09
Classement	Archive	MATIERE		Débit		Coupe	
T 23	O	Version INOX		DN 08 a 50		1/1	
				CODE ARTICLE		N° Plan	
				PS4LSWNI_1		10645	
				Indice		c	